

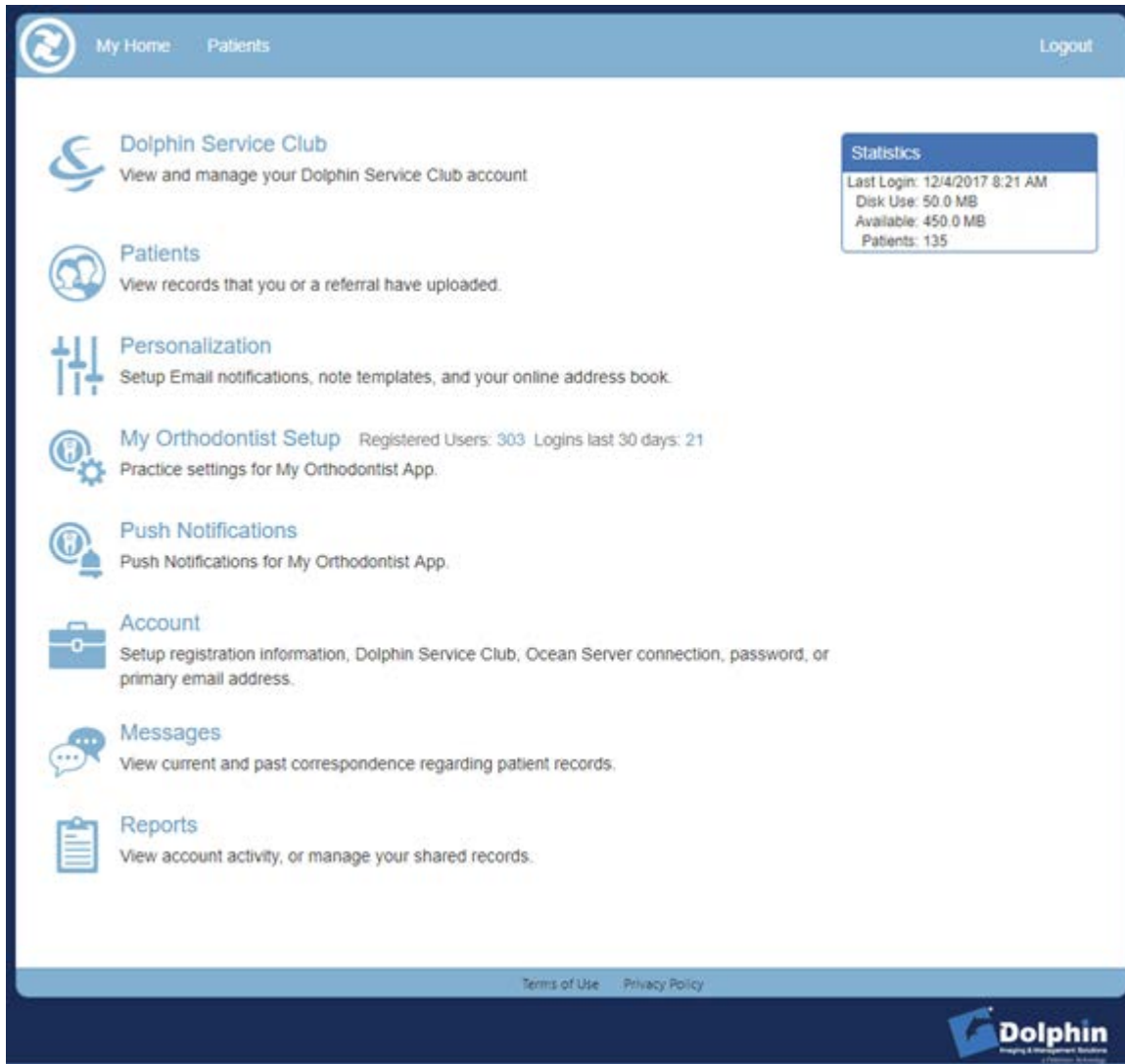
What's new in AnywhereDolphin

C O N T E N T S :

NEW THEME COLOR AND NEW ICONS.....	2
MENU REORGANIZATION	2
VIEW 3D MODEL ATTACHMENTS	3
IMPROVED REPORTS AND PATIENT LOG HISTORY....	3
ACCESS CONTROL LIST (ACL) PERMISSIONS	4
NEW SETTINGS PAGE	4
SEND MESSAGES TO YOUR PRACTICE.....	4
DIRECT EMAIL LINK TO SHARED DOCUMENTS.....	4

New Theme Color and New Icons

- We have replaced the bright orange used in previous releases with a light blue. This is consistent with the rebranding we have done for our other products, based on the Material Design industry standard. We have also replaced the icons for a more unified look and feel.

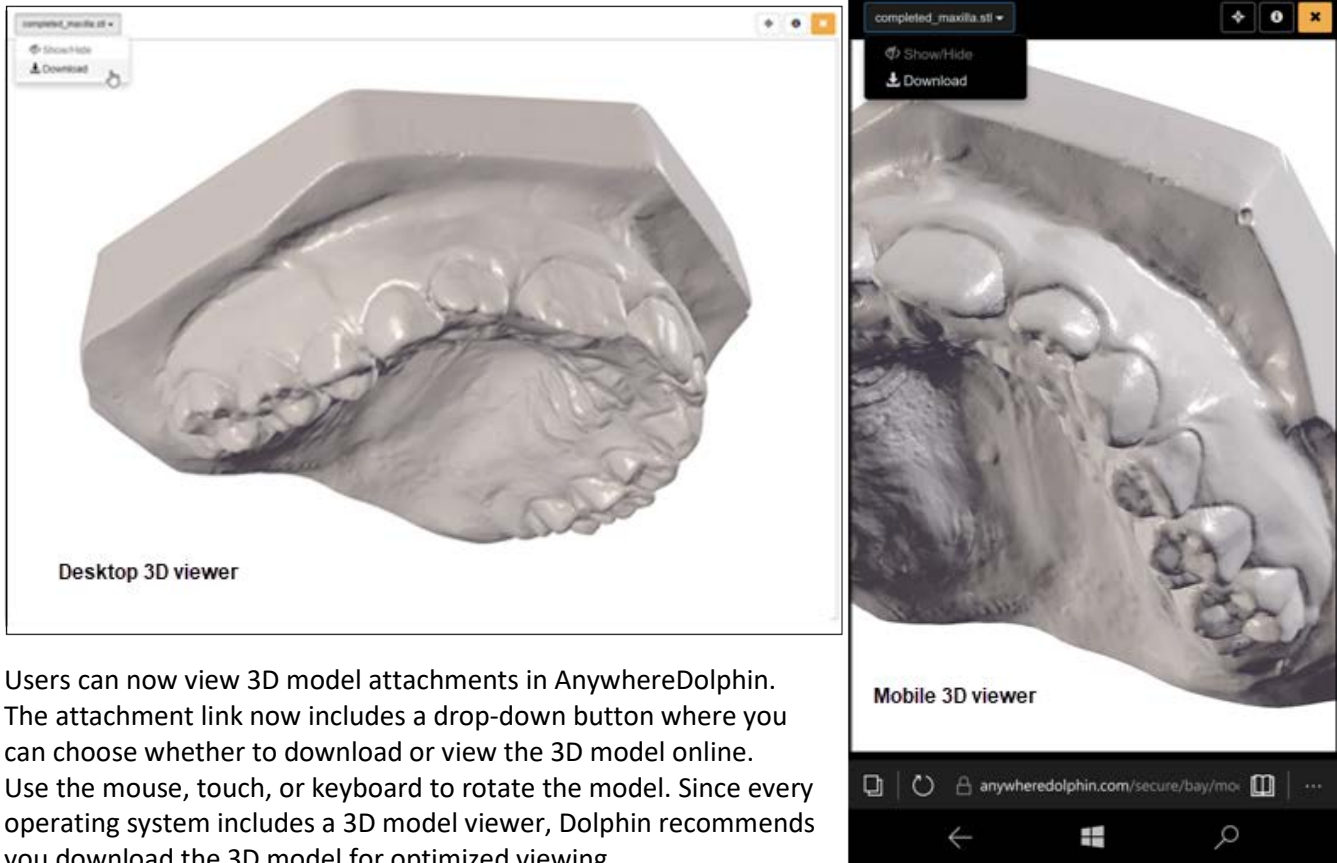


- Additionally, you can set your theme to Light or Dark, per account, or per device. All account types and AnywhereDolphin users can change this setting, and it is supported in every modern browser except Internet Explorer.
- We updated the email templates with links that match the new site colors. We also now use a grey background instead of blue for messages.

Menu Reorganization

We added new options for My Orthodontist Setup and Push Notifications to the AnywhereDolphin main menu. We also improved the My Orthodontist sub-menus for a more consistent user experience.

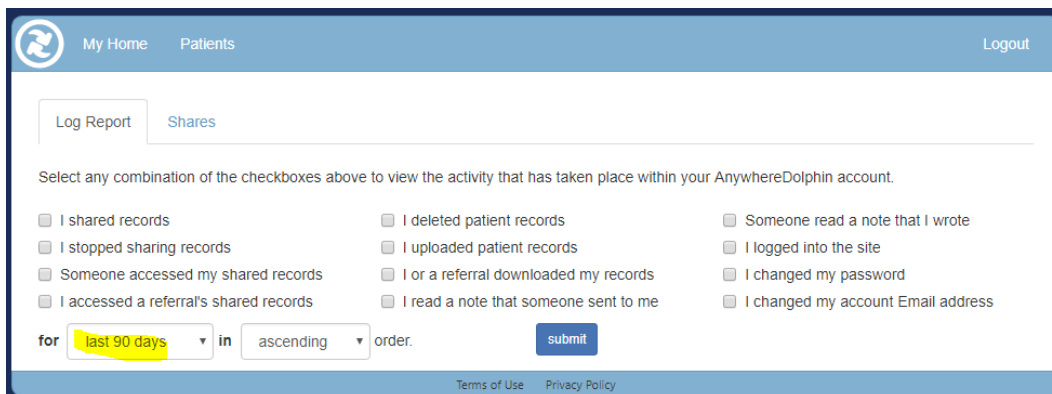
View 3D Model Attachments



Users can now view 3D model attachments in AnywhereDolphin. The attachment link now includes a drop-down button where you can choose whether to download or view the 3D model online. Use the mouse, touch, or keyboard to rotate the model. Since every operating system includes a 3D model viewer, Dolphin recommends you download the 3D model for optimized viewing.

Improved Reports and Patient Log History

- The patient log previously provided the option to list the past 30 days only; now it lists the complete history for each patient record.
- The Log Report page now includes the option for a past 90-days range, whereas previously it was limited to 30 days maximum.



Access Control List (ACL) Permissions

Patient and responsible party data access is now controlled in Dolphin Management via ACL. The Patient Images, Patient Information, Appointment History, Questionnaire, Balance, and Ledger menus now appear based on the ACL permissions for a responsible party and/or patient.

New Settings Page

The Change Password Link for patients and responsible parties has been replaced with a Settings link. Patients and responsible parties can now change their passwords and change the display theme on the Settings page.

Send Messages to Your Practice

Patients and/or responsible parties can send messages to your practice from the Contact Us page on AnywhereDolphin.

Direct Email Link to Shared Documents

When a Dolphin Management user clicks a secure email link to a shared document, that document is opened automatically on the AnywhereDolphin Documents page. When you share a document for a patient or responsible party, the email link opens that document in the Document section for patients and responsible party logins.